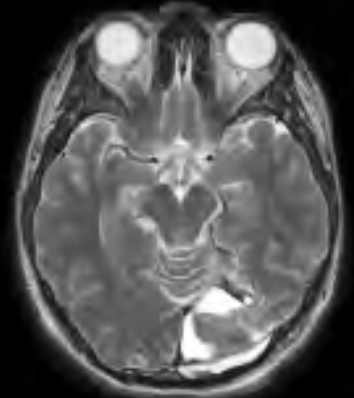
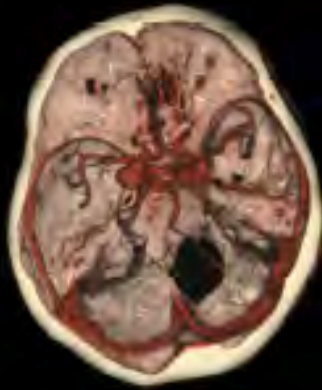


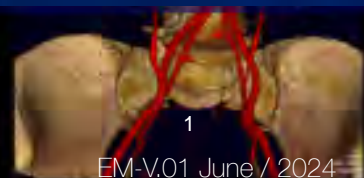


ESTERN
Medical



Advancing Precision Diagnostics

ESTERN Medical CRO's Cutting-edge Radiology Pharmaceutical Research for Clinical MRI, MRA, and PET Trials



Transforming Healthcare

**The future is here
with Translational Medicine & Diagnostic
Imaging**

Welcome to the forefront of healthcare innovation, where translational medicine meets the cutting-edge world of diagnostic radiological imaging.

At the heart of this revolution, we're not just changing how we manage diseases; we're redefining the approach to patient care by making personalized, precision medicine a reality.

A New Horizon in Medicine

"Beyond traditional imaging, we delve into the molecular blueprint of life"

*Dr. Jorge Estrella, MD.
President & CMO at ESTERN Medical CRO Life Sciences*

Leading Innovations in Clinical Trials and Diagnostic Imaging

At the vanguard of diagnostic radiological imaging since the early 2000s, ESTERN Medical CRO Life Sciences champions the integration of advanced technologies and scientific rigor to transform patient care on a global scale.

Our comprehensive expertise encompasses cutting-edge CT, PET, MRI, and vascular imaging technologies, as well as the latest in contrast injectors and pharmaceutical innovations.

We empower the pharmaceutical, biotechnology, and medical device industries to refine diagnostic precision and elevate therapeutic outcomes.

Our unwavering commitment to scientific distinction and clinical innovation positions us to confront the critical healthcare challenges of the 21st century head-on

We are at the forefront of pioneering diagnostic imaging clinical trial solutions, dedicated to the research and development of next-generation contrast media agents.

These agents promise unprecedented molecular-level targeting, alongside the advancement of novel technologies in CT, PET, MRI, and vascular imaging.

Expansive Radiology Clinical Trial Expertise

ESTERN Medical stands as a beacon of excellence in the realm of radiological imaging for clinical trials. With extensive operations across the U.S. and Latin America, we provide unparalleled support, leveraging our deep-seated relationships with major global sponsors, eminent imaging investigators, and key opinion leaders.

Our capability to swiftly access a wide array of patient populations underscores our position as a leading CRO in radiological imaging.

The ESTERN Medical CRO Life Sciences Edge

Our specialization in radiological imaging sets us apart, with a proven track record of managing more imaging compounds for global sponsors across the U.S. and Latin America than any other CRO.

The seasoned expertise of our management team, combined with our proficiency in project management and robust regulatory alliances, guarantees comprehensive study support.

From rapid study initiation and vast patient recruitment to the assurance of high-quality study execution, we deliver on every front.



Focusing on Critical Health and Diagnostic Imaging Challenges

- **Heart Disease**

Spearheading the battle against the primary global cause of mortality, our mission is to identify at-risk individuals early on, employing groundbreaking pharmaceutical diagnostic imaging modalities.

- **Cancer**

Customizing oncological treatments and refining predictive and monitoring methodologies, we are leading the way in cancer care innovating novel diagnostic imaging

- **CNS Health**

With a special emphasis on disorders such as Alzheimer's, our advanced radiological imaging research is poised to improve early diagnosis and monitor treatment effectiveness, shedding light on neurodegenerative conditions.

This concise glimpse into our mission exemplifies the fusion of translational medicine with advanced diagnostic imaging technologies, ushering in a new era of healthcare.

Together with our healthcare innovation partners we are progressing towards a future where personalized therapeutic and diagnostic imaging solutions are the standard, ensuring a healthier tomorrow for all.



Conclusion

ESTERN Medical CRO Life Sciences is steadfast in its dedication to harnessing scientific and clinical expertise to address the evolving demands of healthcare.

In partnership with global sponsors and medical institutions, our mission is to drive patient care forward, pioneering the next wave of innovative R&D in diagnostic and therapeutic modalities.

Our legacy is defined by our commitment to enhancing patient outcomes through the power of precision diagnostics and targeted therapies, today and into the future.

Our Partners, Alliances & Sponsors



Our International Presence

- *Boston & Cambridge (USA)
- *Mexico City (Mexico) - *Bogota (Colombia) - *Santiago (Chile) -
- *Buenos Aires (Argentina) - *Sao Paulo (Brazil)

Corporate Address

ESTERN Medical CRO Life Sciences

955 Massachusetts Ave. No. 203
Cambridge, MA 02139 USA
Tel: +1 (617) 395-0204

To inquire about our CRO Services, please reach out via our company website:
www.esternmedical.com or fill out our company's "Web Contact Us Form", and a member
of our management team will respond to you



[Follow Us](#)



[Follow Us](#)



[Follow Us](#)